

SPACE
3-storey
bungalow

HOME TO
3 adults, 2 kids

LOCATION
Poole Road

RENO PERIOD
3 months

DESIGNER
Tan Su Fern
from Livinz
Synthesis



1

THE HIGH LIFE

A home oozes with panache, thanks to swanky surfaces and a classy dark colour scheme

text HO PEI YING
photos LIVINZ SYNTHESIS

Mr and Mrs Yap decided to engage designer Tan Su Fern from Livinz Synthesis when they purchased their bungalow and needed to renovate certain parts of their new home as they found her work to be different from the ones they have come across in other designers. When it came to design, the gutsy designer dared to challenge the norm, always resulting in spaces that are refreshing yet perfectly suited to their occupants' lifestyle needs. Just like the first home she did up for the owners, a swanky contemporary space,

Su Fern decided to go with a similar theme in this one as per their request. Despite the similar concept, it was nevertheless done up with distinctive features that gave it its own character. This home was previously a show bungalow, which meant that when they purchased it, it came already fully furnished and designed. However because the owners wanted a style to better fit their needs and tastes, Su Fern was roped it to redesign the facade, dining room, master bedroom and the kitchen.

1/ FACADE

The original exterior walls were initially awash in white. However, the homeowners wanted a dark shade to create a posher look, which prompted Su Fern to paint the walls a classy dark brown with grey undertones. She also added sun-shading elements to minimise solar penetration into the bungalow. Light strips were added to the car porch, providing a focal point to the exterior while also helping to illuminate the area at night.

2/ WET & DRY KITCHENS

As they cook regularly, the homeowners wanted separate wet and dry kitchens to better accommodate their culinary requirements. Su Fern adopted a contrasting palette to better define the areas. The dry kitchen features a black colour scheme with matte-black cabinets, while the wet kitchen,

surrounded by glass panels that can be open to release cooking fumes, is swathed in white. A sliding door in the middle is closed whenever heavy cooking is done.

3/ KITCHEN DESIGN ELEMENTS

Several design features in the kitchen stand out. One of which is a small raised ledge added to the back of the dry kitchen's counter. Complete with bar stools, the area is used by the homeowners to spend leisurely evenings sipping drinks. Another design highlight are the top-hung cabinets in the dry kitchen. While the upper cabinets are given a white laminated finish, the lower ones are given a black laminated finish. This juxtaposing colour scheme helps to add a visual layer to the area, while creating the illusion of a taller ceiling.



2



3

highlight
ODD-SHAPED PANELS
WITH A GLASS FINISH
WERE ANGLED
TO CONSTRUCT A
GEOMETRIC PATTERN,
CREATING A VISUALLY
INTERESTING FEATURE
IN THIS AREA.



4

4/ PANTRY

The pantry area was added outside the cooking zone to allow the homeowners to prepare breakfast, beverages and casual meals without having to step inside the kitchens. Tinted grey mirror cabinets add a swank to this area, while providing a space to store their food produce. They also conceal the entrance to the bomb shelter, creating a seamless look throughout the space.

5/ MASTER BEDROOM

The master bedroom was enlarged by combining the existing master bedroom with a smaller room on the second storey. As such, the entire floor is taken up by the couple's sleeping quarters. One portion was set aside for a wardrobe and a two-way designed vanity counter (one side features a full-length mirror, while the other side is the sink), while an area was given to the extended marble-clad master en suite. Su Fern used clear glass panels to enclose the bathroom to better showcase the luxurious surfaces.



5



SPACE
3-bedroom
condo

SIZE
1,700 square
feet

HOME TO
4 adults

LOCATION
The Light @
Cairnhill

RENO PERIOD
6 weeks

BUDGET
\$100K

DESIGNER
Isaac Lau from
Living Synthesis

COSY CHARM

Their request for a comfortable home
has their designer doing up a partial
Scandinavian theme featuring a palette of
creams and woodgrains for the family of four

text HO PEI YING
photos LIVINZ SYNTHESIS

It is a testament to your ability when your previous client engages you for a second time. This was what happened to designer Isaac Lau from Livinz Synthesis. He was asked by his clients to work on their second home, after they fell in love with what he did to their first. While they requested for a more contemporary style in their former flat, the couple, who lives with their two grown-up children, wanted a homelier feel this time. Isaac thus proposed for a semi-Scandinavian theme that was dominated by woodgrain

surfaces, which would lend the interiors the warmth they were looking for. He also chose to include warm LED lights throughout the space to add to the ambiance. Despite facing a tight deadline as the family needed to move in quickly after selling their previous flat, Isaac managed to pull through to create a cosy and welcoming space for the family to fall in love with once again.

highlight

THE TV CONSOLE FEATURE IS KEPT SIMPLE WITH A BOXY DESIGN MADE FROM TWO KINDS OF LAMINATES. RATHER THAN SERVE AS A FOCAL POINT FOR THE LIVING ROOM, WHICH IS A TYPICAL CHARACTERISTIC IN OTHER HOMES, IT BLENDS IN WELL WITH THE OTHER ELEMENTS IN THE COMMUNAL ZONE.



1/ OVERALL

One of the main features of this home is the ceiling design. Triangle-shaped designs are cut out to create a visual impact and to break up the exceptionally long ceiling length in this apartment. To draw emphasis on the feature, the designer also added warm cove and recessed lighting. The rest of the apartment is left simple with a neutral colour palette of creams and woodgrains.

2/ COMMUNAL ZONES

To accommodate the family's request for more storage spaces, Isaac constructed a row of full-height cabinets along one side of the living and dining rooms. The closed compartments hide away the family's huge collection of books, while the open niches serve as their religious

altar and provide a space to display ornaments they have sourced from their travels.

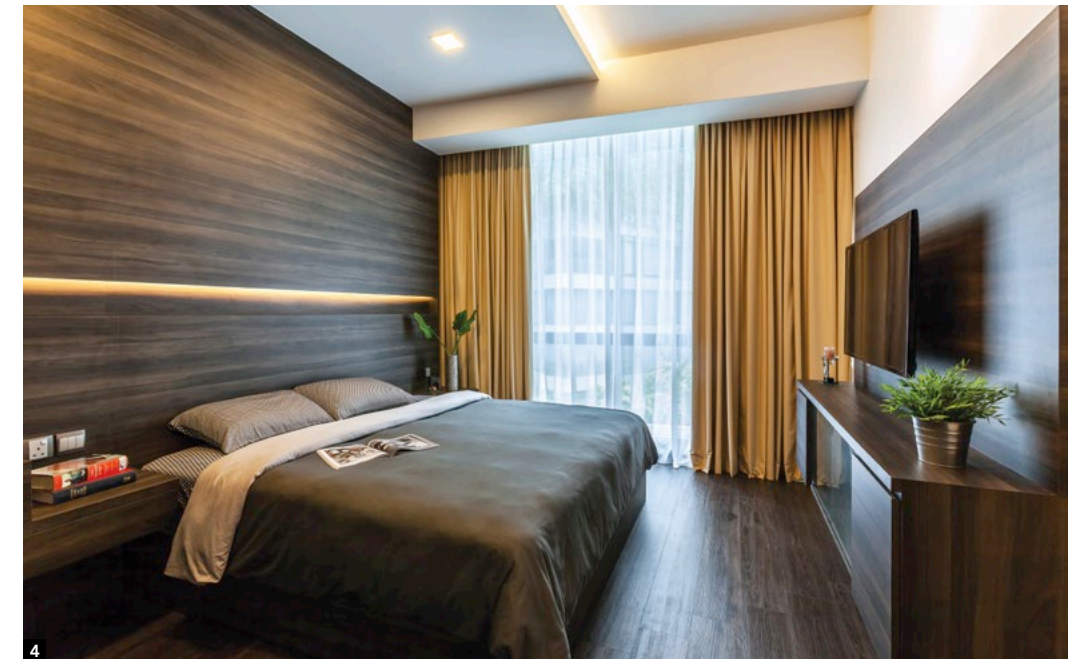
3/ KITCHEN

One is immediately taken with the backsplash tiles in this cooking zone. Blue and vibrantly patterned, they were chosen to add a design detail in the kitchen that is mainly covered in white and woodgrain surfaces. The cabinets' laminates were chosen in a darker and more rustic shade than the ones in the living room as they provide a lesser contrast to the grey-coloured floor tiles here, and because they could better hide the scratches and marks that would come in the long term seeing as the kitchen was one of the more hardworking ones at home.



4/ MASTER BEDROOM

A full-height bedhead, clad in dark woodgrain laminates, lends a majestic quality to the bedroom. It was intended to take advantage of the tall ceiling in the sleeping quarters and is embedded with cove lighting to add to the room's ambiance. The rest of the room is swathed in dark woodgrains so as to create a uniformed and cosy look, although small areas of white – seen in the ceiling – bring a visual balance while making sure the bedroom doesn't appear too dark.

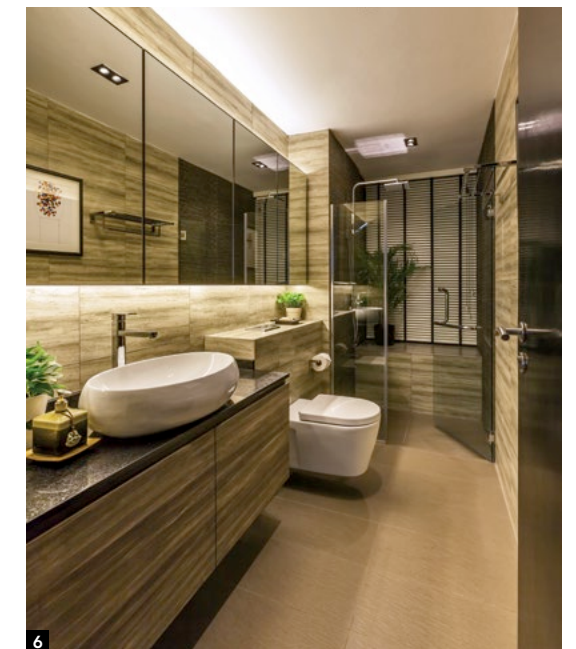


5/ WALK-IN WARDROBE & MASTER EN SUITE

One of the areas in the master bedroom was carved out to create a walk-in wardrobe, filled with open shelving and a transparent glass-topped island unit to display the mistress of the house's accessories and handbags. Next to it is the en suite, whose design is inspired by one of the hotel's bathrooms the couple visited. In order to recreate the look, the bathroom's surfaces are covered in rustic-looking, stonewashed tiles.

6/ COMMON BATHROOM

The common bathroom adopts a similar concept to the master en suite with a hotel-like setting, although it was given a cleaner and more contemporary look with beige-coloured floor tiles. Woodgrain laminates line the walls and the vanity cupboards, while mirror panels placed atop the cabinets create the impression of a particularly elongated bathroom.



LIVINZ SYNTHESIS PTE LTD

Livinz Synthesis is a one-stop solution provider for interior design, project management and renovation services. The firm offers a complete range of high-end interior design and decoration services for both commercial and residential projects. Supported by a team of motivated and well-versed designers boosted by a group of qualified craftsmen, they have been providing personalised, friendly and distinctive solutions to a wide range of clients.

252 Jurong East Street 24 #01-155
Singapore 600252
Tel: 6896 1510 **Hp:** 9008 6496
Email: enquiry@livinzsynthesis.com.sg
Web: www.livinzsynthesis.com.sg
f Livinzsynthesisg